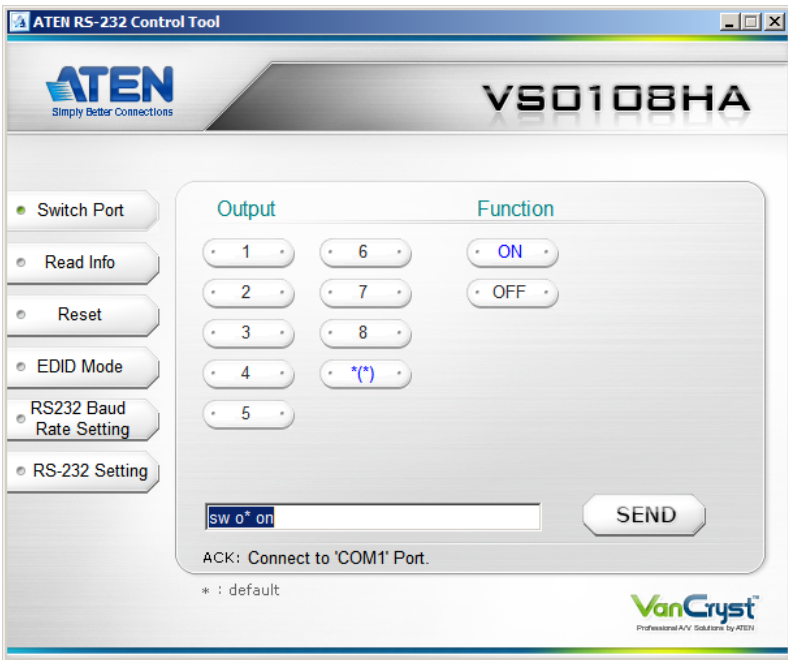


VS0108HA 8-Port HDMI Splitter RS-232 Control Tool

V1.0.061

User Manual



FCC Information

Federal Communication Commission Interference Statement

This equipment has been tested and found to comply with the limits for a Class B digital service, pursuant to Part 15 of the FCC rules. These limits are designed to provide reasonable protection against harmful interference in a residential installation. Any changes or modifications made to this equipment may void the user's authority to operate this equipment. This equipment generates, uses, and can radiate radio frequency energy. If not installed and used in accordance with the instructions, may cause harmful interference to radio communications. However, there is no guarantee that interference will not occur in a particular installation. If this equipment does cause harmful interference to radio or television reception, which can be determined by turning the equipment off and on, the user is encouraged to try to correct the interference by one or more of the following measures:

- ◆ Reorient or relocate the receiving antenna.
- ◆ Increase the separation between the equipment and receiver.
- ◆ Connect the equipment into an outlet on a circuit different from that to which the receiver is connected.
- ◆ Consult the dealer or an experienced radio/TV technician for help.

FCC Caution:

Any changes or modifications not expressly approved by the party responsible for compliance could void the user's authority to operate this equipment.

RoHS

This product is RoHS compliant.

SJ/T 11364-2006

The following contains information that relates to China.

部件名称	有毒有害物质或元素					
	铅	汞	镉	六价铬	多溴联苯	多溴二苯醚
电器部件	●	○	○	○	○	○
机构部件	○	○	○	○	○	○

- : 表示该有毒有害物质在该部件所有均质材料中的含量均在SJ/T 11363-2006规定的限量要求之下。
- : 表示符合欧盟的豁免条款, 但该有毒有害物质至少在该部件的某一均质材料中的含量超出SJ/T 11363-2006的限量要求。
- ×: 表示该有毒有害物质至少在该部件的某一均质材料中的含量超出SJ/T 11363-2006的限量要求。



RS-232 Control Tool Operation

Overview

The VS0108HA's built-in bi-directional RS-232 serial interface allows system control through a high-end controller, PC, and/or home automation / home theater software package. RS-232 serial operations in a VS0108HA installation can be managed via a Graphical User Interface (GUI) on systems that are running Windows. In order to use this Control Tool, two separate items of software must be installed on all of the PCs in your installation – .NET Framework 2.0 and the Control Tool AP. This procedure is detailed in the following sections.

Before You Begin

.NET Framework 2.0

To install .NET Framework on your PC, do the following:

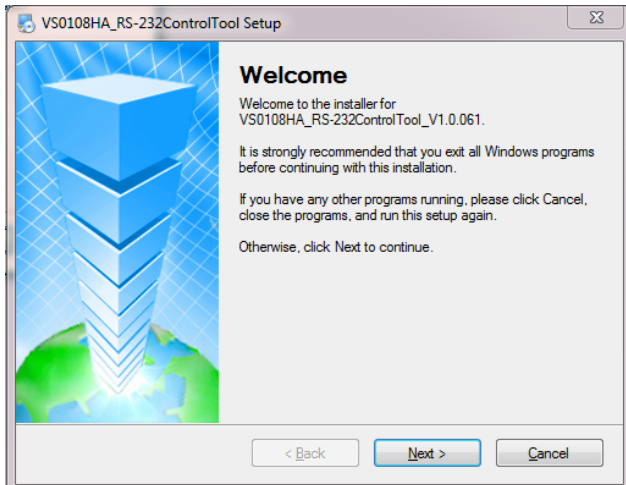
1. Download the executable file from the ATEN website or the Microsoft Download Center online, and run it.
2. Follow the instructions on the screen. The installation applet will automatically detect the operating system and install the correct drivers

Installing the RS-232 Control Tool

To install the RS-232 Control Tool, do the following:

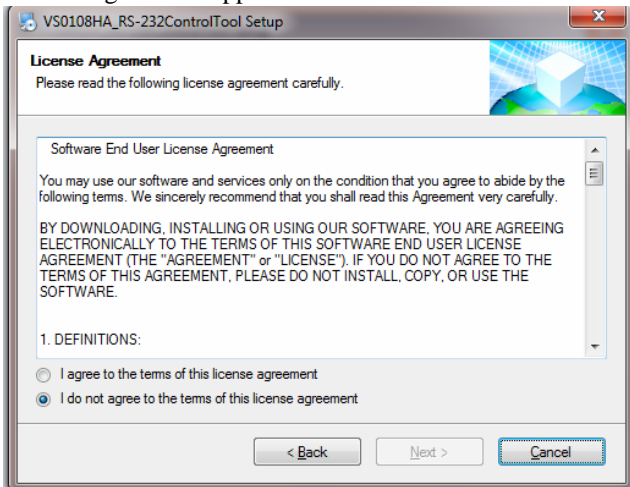
1. Download the RS-232 Control Tool from the Download or VS0108HA's *Resource* page on our website:
`www.aten.com`
2. Save the file to a convenient location.

3. Double click to run the setup file. The Welcome screen appears:



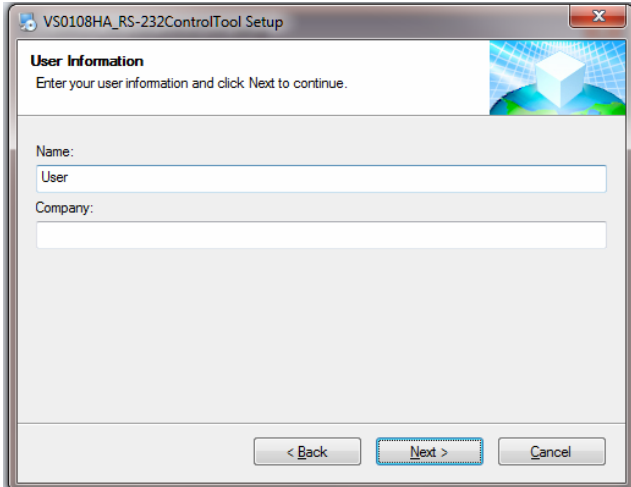
Click **Next**.

4. The License Agreement appears:



If you agree with the License Agreement, select *I agree with the terms of this license agreement*, and click **Next**.

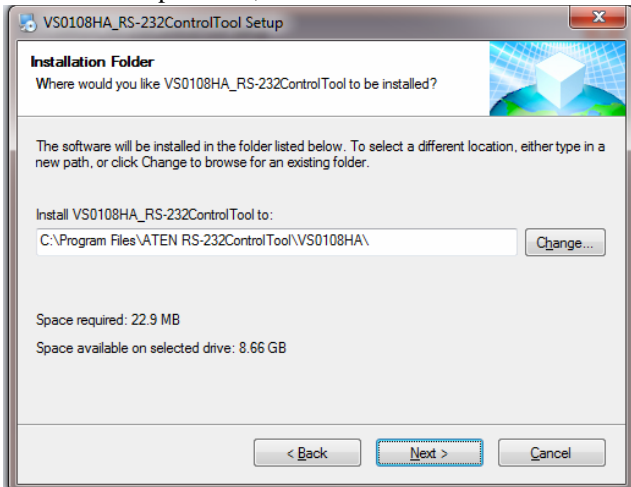
5. The User Information screen appears:



The screenshot shows a Windows-style dialog box titled "VS0108HA_RS-232ControlTool Setup". The main heading is "User Information" with a sub-instruction: "Enter your user information and click Next to continue." Below this, there are two input fields: "Name:" with the text "User" entered, and "Company:" which is currently empty. At the bottom of the dialog, there are three buttons: "< Back", "Next >" (which is highlighted with a blue border), and "Cancel".

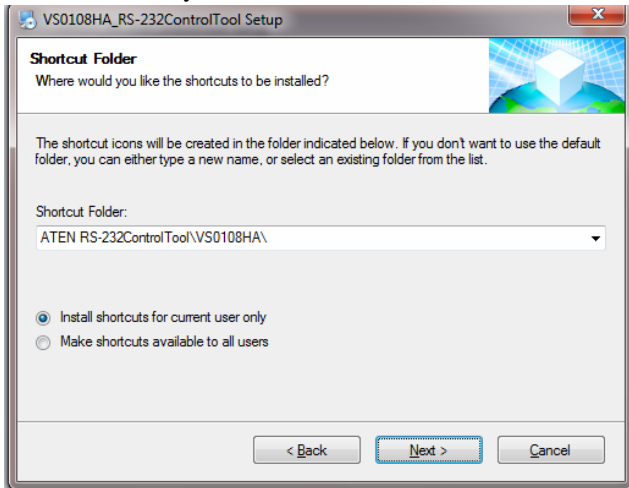
Fill in your *Name* and *Company*, then click **Next**.

6. When the Installation Folder screen appears, you can select where you want to install the program by clicking **Change**, or use the default installation location provided, then click **Next**.



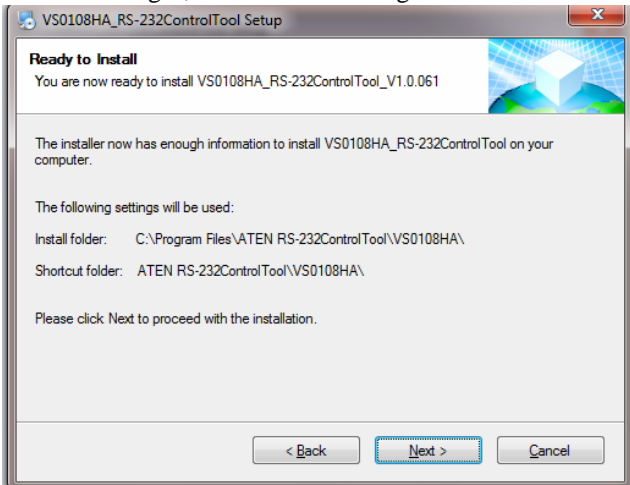
The screenshot shows a Windows-style dialog box titled "VS0108HA_RS-232ControlTool Setup". The main heading is "Installation Folder" with the question: "Where would you like VS0108HA_RS-232ControlTool to be installed?". Below this, there is explanatory text: "The software will be installed in the folder listed below. To select a different location, either type in a new path, or click Change to browse for an existing folder." A text box contains the path "C:\Program Files\ATEN RS-232ControlTool\VS0108HA\" and a "Change..." button is to its right. At the bottom, it displays "Space required: 22.9 MB" and "Space available on selected drive: 8.66 GB". At the very bottom, there are three buttons: "< Back", "Next >" (highlighted with a blue border), and "Cancel".

7. From the Shortcut Folder screen type in or use the drop-down menu to enter the folder where you want to install the shortcuts:

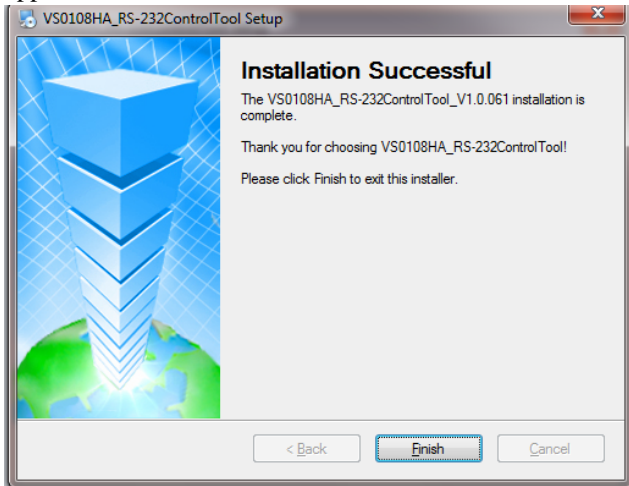


Then select *Install shortcuts for current user only*, or *Make shortcuts available to all users*, and click **Next**.

8. At the Ready to Install screen confirm your settings, click **Back** if you need to make changes, or click **Next** to begin the installation:



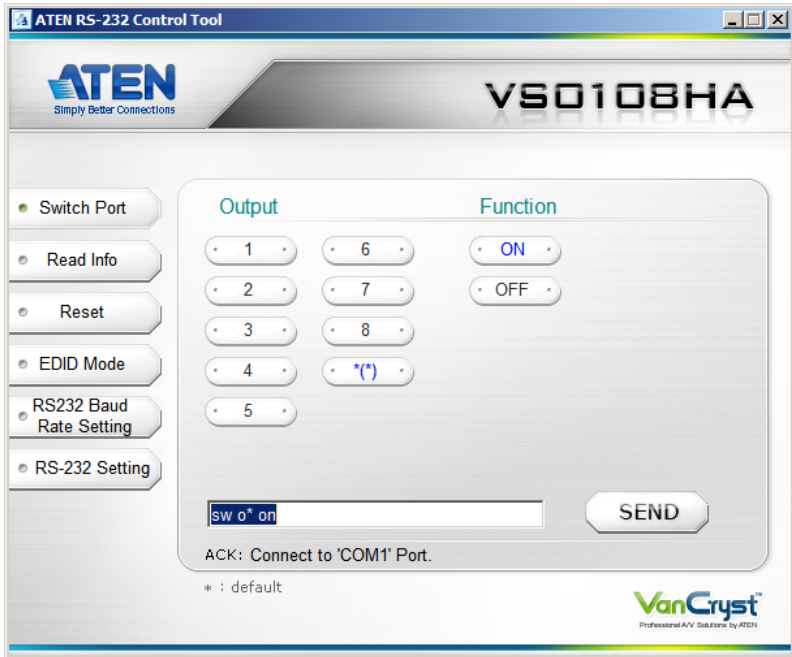
9. When the installation has completed successfully, the following screen will appear:



Click **Finish**. You are now ready to use the RS-232 Control Tool.

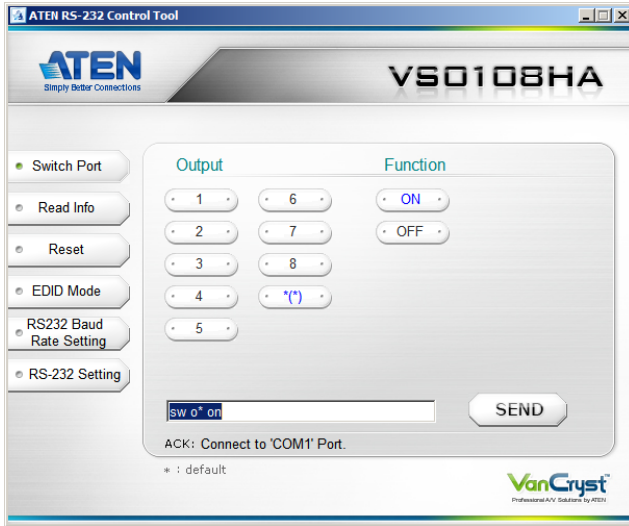
GUI Main Page

The RS-232 Control Tool is a convenient and intuitive method to manage the RS-232 commands in your VS0108HA installation from one screen. To invoke the GUI, simply click on the icon in your file system. The interface appears, and opens on the Switch Port page by default, as below:



The various elements of the GUI are described in the following sections.

Switch Port



The Switch Port page is used to turn the display ports On or Off. On the Switch Port page, the following actions are possible:

- ◆ Click an **Output** port to select it. Options are ports 1~8 and * (where * = all output ports).
- ◆ Click to turn the **Display** On or Off.
- ◆ Click **Send** to send the command.

Switch Port Commands

These actions can also be performed by keying the command into the text box, and clicking **Send**.

The formula for Switch commands is as follows:

Switch Command + Output Command + Port number [Enter]

1. For example, to switch on output port 02, type the following:
sw o02 on [Enter]
2. To switch all output ports off, type the following:
sw o* off [Enter]
3. To turn on the local output port, type the following:
sw o11 on [Enter]

The following tables show the possible values and formats for the **Input** command, **Port Number** and **Control**:

Command	Description
sw	Switch command

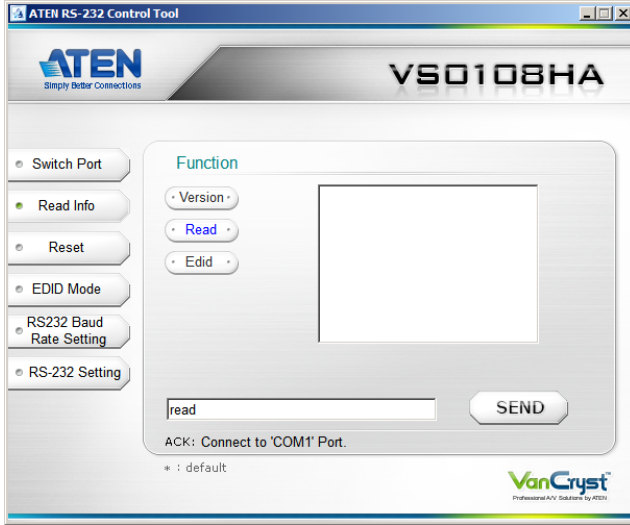
Output Command	Description
i	Input command

Port number	Description
xx	01-08 port (default is 01)
*	All output ports

Control	Description
on	Turn on the display
off	Turn off the display

-
- Note:** 1. Each command string can be separated with a space.
2. The **Port Number** command string can be skipped, and the default value will be used.
-

Read Info



On the *Read Info* page, the following actions are possible:

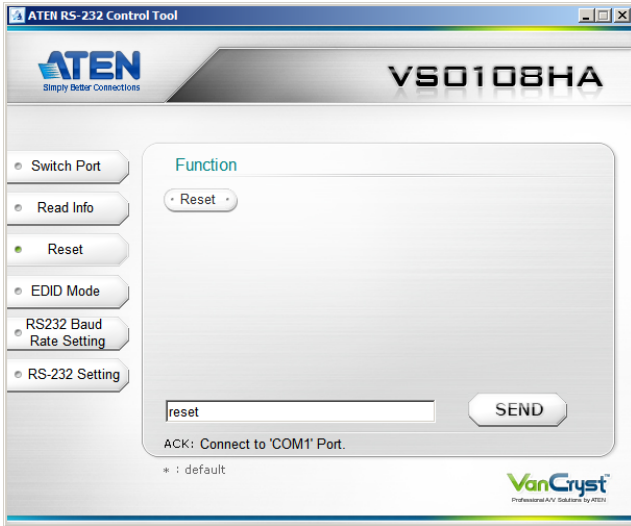
- ◆ Click **V**ersion to view the current firmware version.
- ◆ Click **R**ead to view the current video/audio status.
- ◆ Click **E**DID to see which EDID setting is implemented to device 01.
- ◆ Click **S**end to send the command.

Read Info Command

View information from the device using the following command:

Read Command + Control (version / read / EDID) [Enter]

Reset



On the *Reset* page, the following actions are possible:

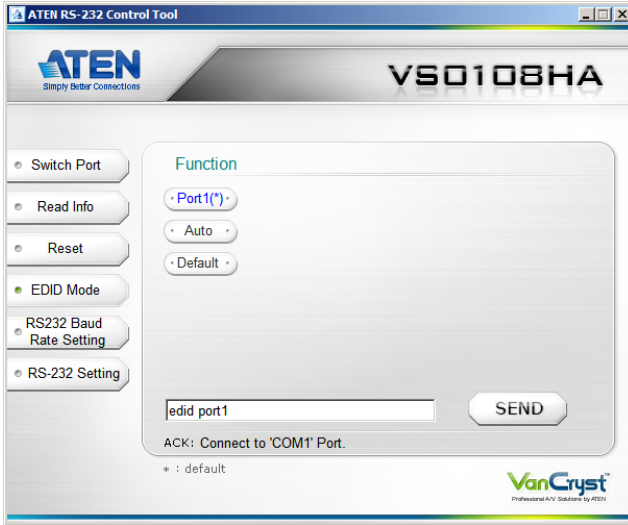
- ◆ Click **Reset** to reset the VS0108HA to default factory settings.
- ◆ Click **Send** to send the command.

Reset Command

The formula for the Reset command is as follows:

Reset Command [Enter]

EDID Mode



On the *EDID Mode* page, the following actions are possible:

- ◆ Click on **Port1** to implement the EDID of the connected display to Port 1, and pass it to the video source.
- ◆ Click **Auto(*)** to implement the EDID of all connected displays. The VS0108HA uses the best resolution for all displays (default).
- ◆ Click **Default** to implement ATEN's default EDID.
- ◆ Click **Send** to send the command.

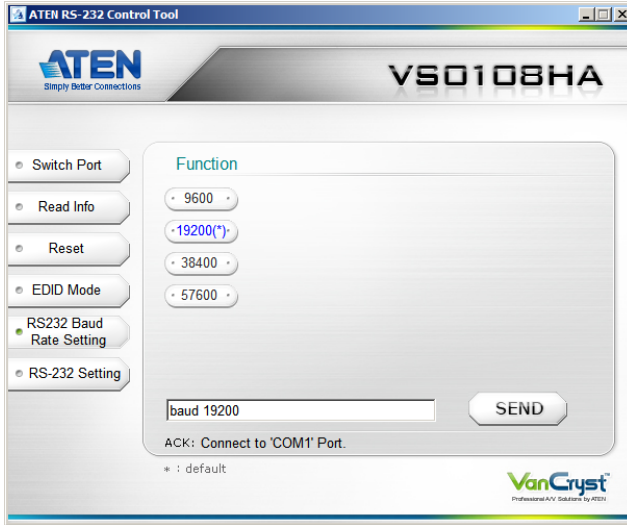
Extended Display Identification Data (EDID) is a data format that contains a display's basic information and is used to communicate with the video source/system. You can set up which EDID mode the VS0108HA uses with the following command:

EDID Command + Control (port1 / auto / default) [Enter]

For example, to use the Port1 EDID setting, type the following:

edid port1 [enter]

RS-232 Baud Rate Settings



On the *Baud Rate Settings* page, the following actions are possible:

- ◆ Select the RS-232 Baud Rate you want the VS0108HA to use. Options are 9600, 19200 (default) 38400 and 115200.
- ◆ Click **Send** to send the command.

Baud Rate Settings Command

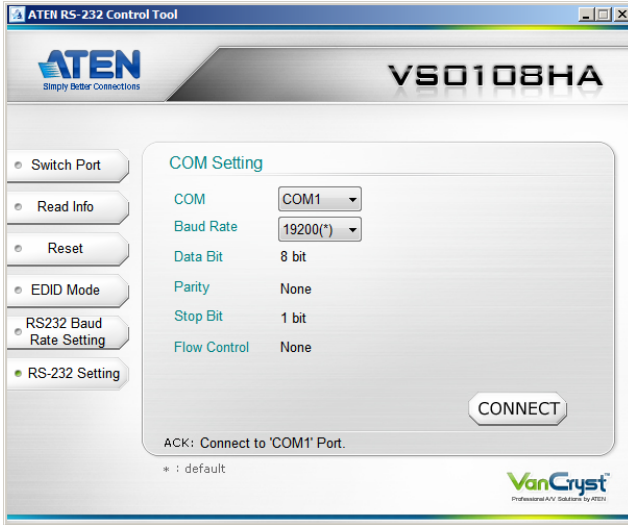
The formula for Baud Rate setting command is as follows:

Baud Command + Control [Enter]

For example, to select 38400 as your baud rate, type the following:

baud 38400 [enter]

RS-232 Settings



The controller's serial port should be configured as follows:

Baud Rate	19200
Data Bits	8
Parity	None
Stop Bits	1
Flow Control	None

To select the serial port, do the following:

- ◆ Select a port from the drop-down menu and click **CONNECT**.

If the port has been selected, the Acknowledgment message will read:

Opened port COM1 successfully

Verification

After entering a command, a verification message appears at the end of the command line as follows:

- ◆ **Command OK** - indicates that the command is correct and successfully performed by the switch
- ◆ **Command incorrect** - indicates that the command has the wrong format and/or values.